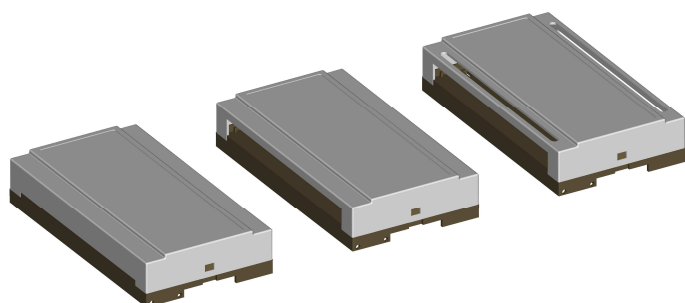


# 9 MODULE LOW ENCLOSURES FOR M36 DIN-RAIL

**SERIES  
1570  
FLAT**



Available in a closed version for making customised openings for connectors and an open version for pluggable terminals

Module enclosure for M36 DIN-rail. Series 1570 flat is, if requested, available in several colours and with custom made holes in the front.

Lid, PCB, customized label and packing is available.

A closed version without terminals is also available.

Trimmers and spindles that fit the height of the box are available.

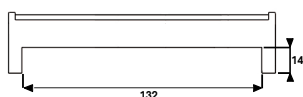
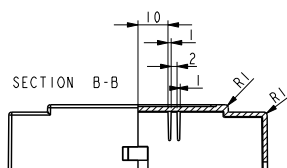
## TECHNICAL DATA

### TOP PART:

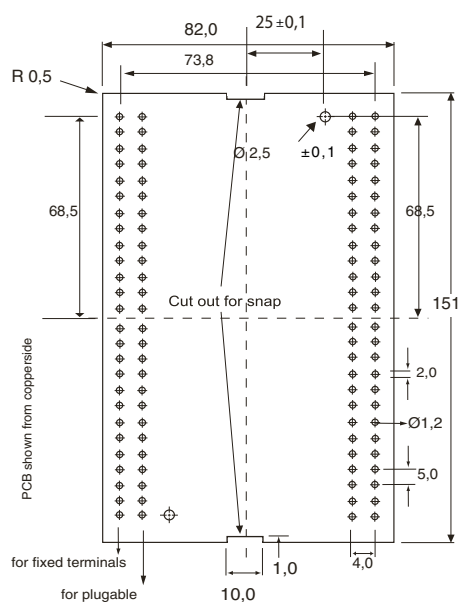
Material:	Lexan 945
Colour:	Grey (RAL 7035)
Max. temperature:	100° C
Width:	157 mm (9 modules)
Label measurement:	52 x 150.0 mm
Self-extinguishing:	Acc. to UL94-V0
IP Protection:	IP 20

### BASE PART:

Material:	Noryl VO 1550
Colour:	Black (RAL 9005)
Max. temperature:	100° C
Max. wire dia.:	2 x 2.5 mm <sup>2</sup>
Max. load:	10A (for higher load please inquire)
Terminals:	52 fixed or pluggable
Mounting:	DIN-rail (EN50022)
Self-extinguishing:	Acc. to UL94-V0



### HORIZONTAL PCB DIMENSIONS:



- All measurements are in mm.
- Please note that most pluggable terminals are in 5,08 pitch and need a bigger hole in the PCB

TYPE 1570 flat:	ORDER CODE:
Complete, 257 for pluggable	p/n 8069101571
Complete, closed, no terminals	p/n 8069101570
Top part, 257, pluggable	p/n 8069001571
Top part, grey, closed, no terminals	p/n 8069006101
Base part with clip and 2 screws	p/n 4969021571
DIN-rail clip for 1570	p/n 0669000604
Packing for 1570	p/n 2068157000
PCB for 1570	p/n 4999001570
Terminal for 1570, 257/13, HO/A, PCB	p/n 1155718580
part Terminal for 1570, 256/13, wire part	p/n 1155618080
Terminal for 1570, 605/13, fixed terminals	p/n 3950141808
Screw/selfcutting 2 pcs.	p/n 7006102965

Many more p/n available - please enquire.

For detailed drawings please see [www.bernic.dk](http://www.bernic.dk)  
or ask for a CAD drawing