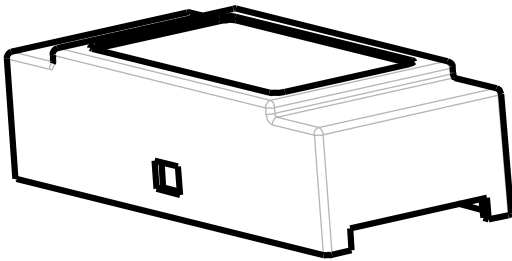


2 MODULE FLAT ENCLOSURES FOR M36 DIN-RAIL

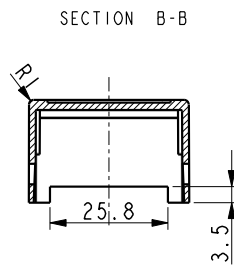
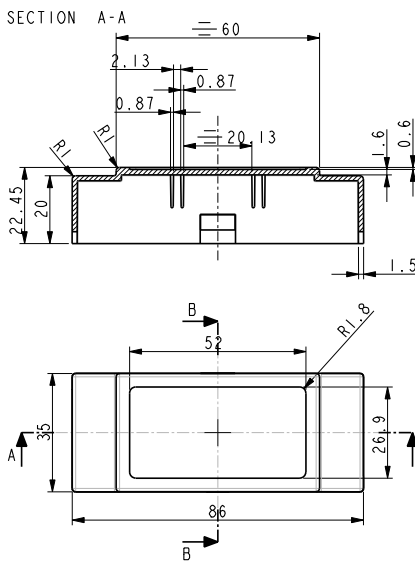
**SERIES
350 FLAT**



The Series 350 flat is a compact module enclosure, designed for applications that don't require extra space above the PCB. By reducing this space and eliminating the need for long spindles for switches, trimmers, and light guides for LEDs, this enclosure helps our customers save money and space.

Series 350 flat is, if requested, available with engraved terminal numbers and symbols, and with custom made holes in the front.

Lid, PCB, customized label, and packing is available. A closed version without terminals is also available. Light conductors and spindles that fit the height of the box are available.



TECHNICAL DATA

TOP PART:

Material:	Lexan 940
Colour:	Grey (RAL 7035)
Max. Temperature:	100° C
Width:	35 mm (2 modules)
Label Measure:	51.7 x 26.6 mm
Self-extinguishing:	Acc. To UL94-V0
IP Protection:	IP 20

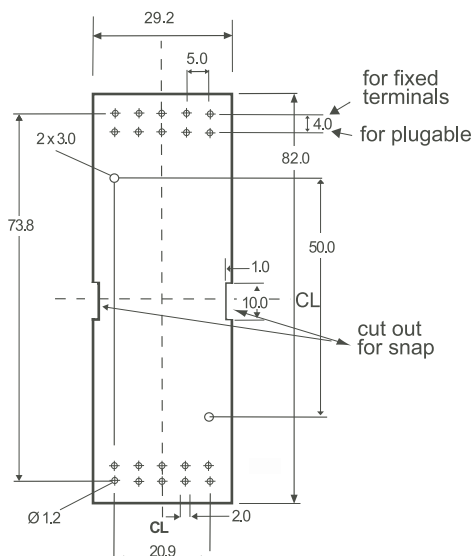
BASE PART:

Material:	Noryl VO 1550
Colour:	Black (RAL 9005)
Max. Temperature:	100° C
Max. Wire dia:	2x2.5mm ²
Max. Load	16A (for higher load please inquire)
Terminals:	10 fixed or plugable
Mounting:	DIN-rail (EN50022)
Self-extinguishing:	Acc. To UL94-V0

For detailed drawings please see www.bernic.dk or ask for a CAD drawing

HORIZONTAL PCB DIMENSIONS:

PCB shown from copperside



TYPE 350 FLAT:	ORDER CODE:
Type 350 flat top grey/closed	p/n 49793490350
Type 350 flat top grey/257	p/n 49793490351
Type 350 flat top grey/605	p/n 49793490352
Type 350 flat top complete grey/closed	p/n 49773490350
Type 350 flat top complete grey/257	p/n 49773490351
Type 350 flat top complete grey/605	p/n 49773490352
Basepart with clip and 2 screws	p/n 4979332351
DIN-rail clip for 350	p/n 0669000605
Terminal for 350, 257/5, HO/A, PCB part	p/n 1155705580
Terminal for 350, 256/5, wire part	p/n 1155605080
Terminal for 350, 605/5, fixes terminals	p/n 3950145180
Packing for 350	p/n 2068350002
Raw PCB for 350	p/n 4999000350
Screw/selfcutting 2 pcs.	p/n 7006102965

Many more p/n available - please enquire.

*All measurements are in mm.

**Please note that most plugable terminals are in 5,08 pitch and need a bigger hole in the PCB